

# GreenWays



## ZERO WASTE LEADER

Zero Waste is important to all businesses, and you can make a difference by appointing a staff member as a Zero Waste Leader.

The Zero Waste Leader would act as the go-to resource for any zero waste questions or onsite sorting challenges. GreenWaste Environmental Outreach Coordinators (EOCs) can provide the leader with free resources and training.

## SORTING GUIDANCE: STYROFOAM™ IS NOT RECYCLABLE

Expanded Polystyrene, also known by its brand name Styrofoam™, is a form of plastic #6. Unfortunately, there are no viable, consistent, or cost-effective markets currently available for this material type. As such, Styrofoam™ is **NOT** recyclable.

Today, most Styrofoam™ comes in the form of packaging material, such as foam blocks and foam peanuts. Due to its lightweight nature and propensity to break down into smaller pieces, foam remains one of the most prevalent forms of litter and often ends up in our creeks and waterways.



Avoid purchasing Styrofoam™ products when possible and place any you have in your black landfill container. If it is too large to fit into your black landfill container, break it into smaller pieces. Make sure to **bag the smaller pieces** so they are contained and they don't become a litter problem.





## PAUSD & PENINSULA FOOD RUNNERS

In response to the new edible food recovery requirements outlined in California's Senate Bill 1383, the Palo Alto Unified School District (PAUSD) started the year off with an exciting new partnership.

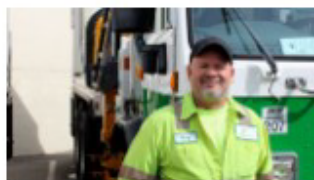
PAUSD Food Services set up a partnership with Peninsula Food Runners, an organization that will pick up leftovers from school lunches and provide them to families in need.

The school district's edible leftover food gets collected and centralized at JLS Middle School and then picked up by Peninsula Food Runners to be distributed to shelters, pantries, food banks, homeless programs, and low-income families.

Peninsula Food Runners provides more than 2.5 million pounds of free food annually throughout the Bay Area. The pickup and drop off service is entirely free for the donors and recipients with the help of over 600 volunteers.

This partnership will benefit the community greatly and help Palo Alto continue to work towards Zero Waste. For more information check out:

[www.peninsulafoodrunners.org](http://www.peninsulafoodrunners.org)



## JIMMY ARROYO: 29 YEARS SERVING PALO ALTO

Jimmy Arroyo started his career as a Palo Alto collection driver in 1993 and has been working in the city for 29 years.

Jimmy has primarily worked as a residential garbage driver and has made a lasting impact within the Palo Alto community. When asked about his time as a driver, he reflected upon his most challenging and treasured memories. He recalled the challenges of his earlier years driving his truck without a radio and relying on his customers to relay any major new stories while on the job, including the tragedy of 9/11. His most cherished memory was wading through the 1998 flood and coming together with his fellow drivers to ensure that all of Palo Alto's waste and debris was collected after the disaster. "We had a job to do, and nothing was going to get in our way," Jimmy said.

After a long and successful career, Jimmy will be retiring at the end of this year. Jimmy values the many relationships he has cultivated throughout the years and is grateful for the community's generosity. Jimmy says, "I never had a problem with anyone and everyone kept me safe. I can't ask for more than that." Although he feels bittersweet about leaving, he is looking forward to retiring and moving to Texas to be closer to his extended family. Jimmy will truly be missed, but we can't wait to see what the future has in store for him!

"It has truly been an honor serving the public." - Jimmy Arroyo



## WASTE STATION REFRESHER

A waste station consists of a recycle, compost, and landfill container side by side with corresponding sorting signage and color-coded liners. Waste stations provide proper accessibility to aid with correct waste sorting for customers and employees.

Follow these steps to create effective waste stations:

1. Obtain color-coded waste containers. Blue for recycle, green for compost, and black/gray for landfill.
2. Obtain color-coded liners. Transparent blue tinted bags for recycle, transparent green compostable bags for compost, and clear bags for landfill.
3. Identify central areas to establish waste stations, such as kitchens, conference rooms, and break rooms.
4. Set up the uniform waste stations with containers side by side and signage located at eye level.
5. Remove stand alone or "rogue" landfill containers. These containers tend to be a catch-all for all types of waste and can prevent proper sorting.

GreenWaste Environmental Outreach Coordinators (EOCs) can help your business with establishing waste stations, right sizing your service, and providing proper signage and resources, all for FREE. Contact GreenWaste [Customer Service](#) for assistance