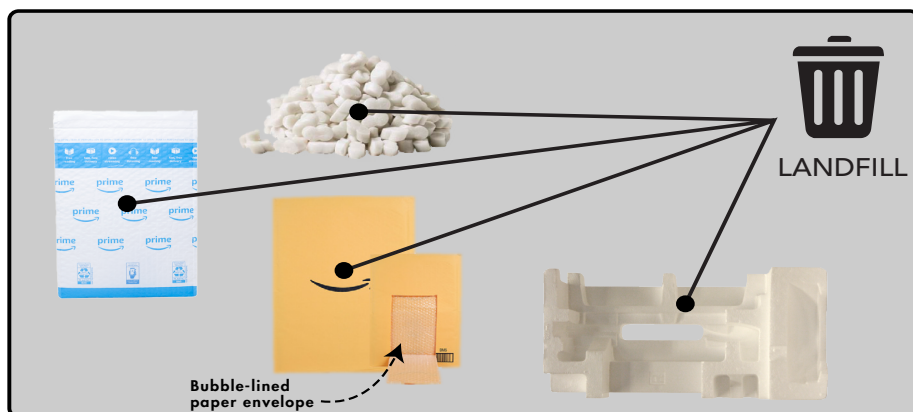
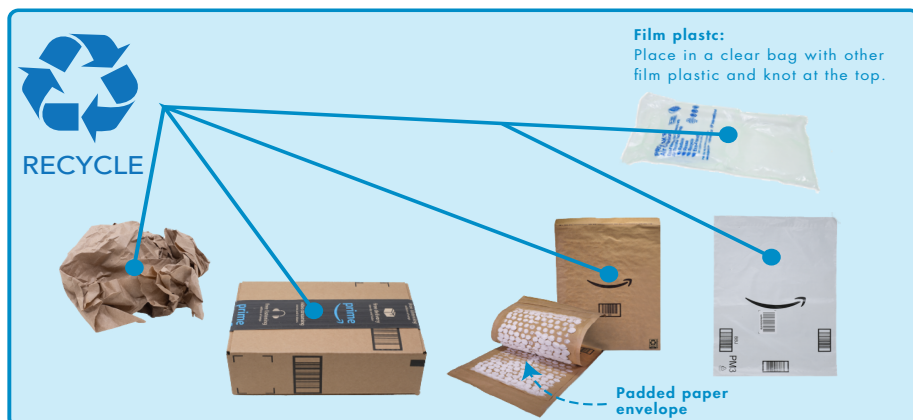


GreenWays

THE QUARTERLY RESIDENTIAL NEWSLETTER FROM GREENWASTE OF PALO ALTO **SPRING 2021**

PACKAGING WASTE DISPOSAL

Products ordered online are often delivered with excessive amounts of packaging material. To ensure packaging waste goes in the correct cart, follow these general guidelines:



To reduce packaging waste from online orders:

- Request that your items are shipped together
- Shop from companies that offer "frustration free" packaging or use only recyclable packaging materials
- Directly request the company to limit packaging for your order

GREENWASTE HIGHLIGHTS

• SPRING CLEANING?

- » Explore reuse or donation options such as Freecycle and Nextdoor
- » Take advantage of your Clean Up Day. Find the date of your next Clean Up Day at www.greenwasteofpaloalto.com/cleanupday
- » Schedule a special pickup

UPCOMING EVENTS

Due to COVID-19, the following events may be adjusted. Check with the event organizers prior to the event.

• COMPOST BASICS WORKSHOPS:

- » March 6, 10am-12pm
Via Zoom, scan to register:
- » April 17, 10am-12pm
Gamble Garden, Palo Alto
- » June 6, 10am-12pm
Lucy Stern Community Center, Palo Alto



• WORM COMPOST WORKSHOP:

- July 17, 10am-12pm
Cubberley Community Center, Palo Alto

• DOCUMENT SHREDDING:

- March 6, 8am-12pm
SMaRT Station
301 Carl Road, Sunnyvale

• HOUSEHOLD HAZARDOUS WASTE (HHW) DROPOFF:

- Every Saturday, 9am-11am
First Friday of each month, 3pm-5pm
2501 Embarcadero Way, Palo Alto

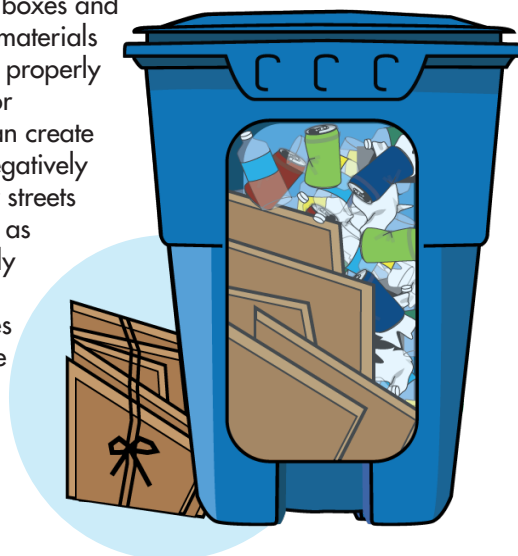
GOT CARDBOARD BOXES?

Ordering items online means more cardboard boxes in the recycle cart. To manage all the extra cardboard, be sure that the boxes are properly prepared for your recycling pickup:

- » Remove all packing material and place in the correct cart. Clean film plastic should be bagged with other film plastic and placed in your blue recycle cart. Styrofoam goes in your black garbage cart.
- » FLATTEN cardboard and place it inside your blue recycle cart with other recyclables. Tape, labels, and staples on boxes are okay.
- » While excess cardboard can be placed in a tied 2'x3' bundle next to your blue cart, we ask that you try to fit all your cardboard inside your cart in order to limit the need for GreenWaste drivers to hand-collect material at this time.
- » Bundle kits consisting of twine, a box cutter, and a ruler are available for free; contact GreenWaste Customer Service to request one.
- » Excess cardboard can also be taken to the Sunnyvale SMaRT Station.

Cardboard boxes and packaging materials that are not properly prepared for recycling can create litter that negatively impacts our streets and creeks, as well as costly operational inefficiencies in our waste collection system.

If you consistently have extra cardboard, you can increase to a larger recycle cart or request additional blue recycle carts by contacting GreenWaste Customer Service.



DEAD BATTERIES: WHERE DO I PUT THEM?

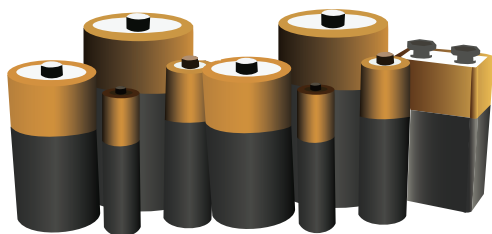
Batteries are considered hazardous waste.

This is due to the heavy metals and corrosive materials they contain including acid, lead, and mercury. Some batteries, such as lithium and lithium-ion, are combustible and can even pose a fire danger. Proper and safe disposal of spent batteries is very important; batteries cannot be disposed of in any curbside container.

In Palo Alto, batteries can be set out for collection in a tear resistant bag during a pre-scheduled Clean Up Day or taken to the Household Hazardous Waste (HHW) Station.

For Clean Up Day guidelines, visit greenwasteofpaloalto.com/CleanUpDay

For more information about the HHW Station, visit www.cityofpaloalto.org/hazwaste



COMPOST GIVEAWAY STATION

It's time to start your plantings for your spring garden!

With FREE compost available for Palo Alto residents at the Eleanor Pardee Community Garden, you can treat your plants to good quality compost that improves your soil and enhances your garden's health and vitality!

LOCATION:

Eleanor Pardee
Community Garden,
851 Center Road

HOURS:

Tuesday through
Sunday, 9am – 4pm

GUIDELINES:

- Bring your own shovel and containers to put the compost in
- Only one car is allowed at the compost pile at a time
- Pickup limited to 96 gallons per week
- Drive carefully – gardeners and pedestrians are in the area to enjoy the garden
- Compost is available while supplies last

Since the first delivery in June 2020, over 600 cubic yards of compost have been distributed to and used by Palo Alto residents!

