

GreenWays

THE QUARTERLY RESIDENTIAL NEWSLETTER FROM GREENWASTE OF PALO ALTO **SUMMER 2020**

DECONSTRUCTION ORDINANCE

44% of Palo Alto's landfilled waste comes from construction and demolition projects. However, nearly all this material is suitable for reuse or recycling. Palo Alto's new Deconstruction Ordinance, set to take effect July 1, 2020, aims to maximize reuse and recycling of building materials and components. The ordinance affects all residential and commercial projects where structures are being completely removed (formerly known as demolition).

By carefully disassembling buildings piece by piece, materials that are fit for reuse such as doors, windows, lighting and plumbing fixtures, and lumber can be salvaged as-is by reuse organizations.

These items will be resold and incorporated into other construction projects. Through the deconstruction process, building materials not suitable for reuse are separated by material type before being processed for recycling.



Source separating by material type significantly increases the recyclability of the materials. Deconstruction, reuse, and recycling attain a higher end use for building materials, reduce the amount of waste sent to landfills, conserve natural resources, reduce greenhouse gases, and encourage Zero Waste.

For more information, visit www.cityofpaloalto.org/deconstruction

GREENWASTE HIGHLIGHTS

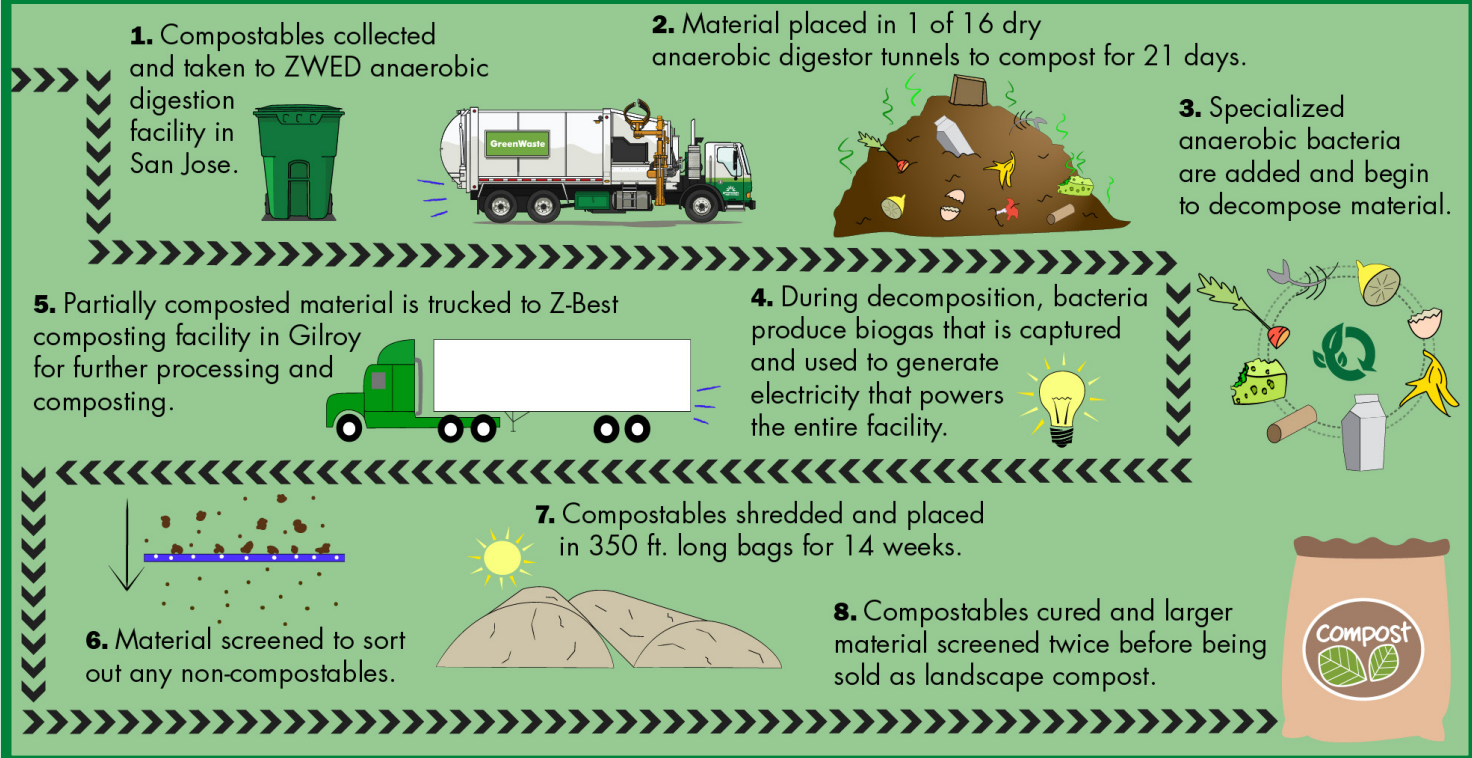
- **SOCIAL MEDIA:** Follow @GreenWastePA on Twitter, Instagram, and Facebook for collection updates, recycling tips, and a look inside the processing facilities.

UPCOMING EVENTS

Due to COVID-19 these events may be cancelled or adjusted to allow for new safety protocols. Visit the website or call Zero Waste Palo Alto for more information.

- **DOCUMENT SHREDDING:**
www.cityofpaloalto.org/shred
- **COMPOST & WORM WORKSHOPS:**
www.cityofpaloalto.org/compost
- **REPAIR CAFE:**
www.repaircafe-paloalto.org
- **HOUSEHOLD HAZARDOUS WASTE STATION:**
www.cityofpaloalto.org/hazwaste

FROM GREEN CART TO COMPOST



INTERVIEW WITH STEVE: PALO ALTO DRIVER

Meet Steve: a GreenWaste residential driver who services garbage and recycling. Steve describes his experiences servicing the Palo Alto community over the last 13 years:

My favorite part of being a GreenWaste driver is the customers. I enjoy when the children come outside and watch me dump the carts. They love that. The most challenging part of the job is dealing with traffic. I always try to maintain a safe driving record. Anytime I'm on the road, I'm always thinking of safety: the traffic, my uniform, my truck's functions, and weather considerations.

During my time with GreenWaste, I've seen major industry changes, including lot of new equipment which makes waste sorting much more efficient. The volume of recyclables keeps going up while garbage is going down. I've witnessed Palo Alto get better and better at sorting their waste, but there's always more to learn. The frequent items that I see in the recycling which do not belong there are shoes, plastic foam, wood, and clothes.

Steve's message to Palo Alto residents: Keep flattening those cardboard boxes and try your best not to overfill your carts. Doing this helps prevent spills and litter and helps make our job more efficient.



PAPER: RECYCLING OR COMPOST?

There is a significant and constant threat to paper recycling: food and liquid. Food and liquid find their way into the recycling when recyclables aren't properly emptied or prepared for recycling. Since all of Palo Alto's recyclables are mixed together, the food and liquid in bottles, cans, and containers can leak and soil the paper products.

To ensure your paper products get a second life:

- » Remember that clean and dry paper goes in the recycling and soiled paper goes in the compost.
- » Empty out recyclable containers by pouring, scraping, and wiping out any residue - no need to rinse
- » More information: cityofpaloalto.org/recycleready



No need to rinse. Let's continue to conserve water!